



**McGil Constructions and Facility Management**

**...Perfect Quality Solutions for You**



**McGil Construction and Facility Management**  
339, Borno Way, Alagomeji, Yaba, Lagos  
Tel: 01-8429649; 08023444484; 07034626743  
Email: Careline@mycrocycleglobal.com  
Website: www.mycrocycleglobal.com

Civil/Electrical/Mechanical



## TABLE OF CONTENTS

Cover Page	1
Table of Contents	2
List of Pictures	3
List of Tables	4
List of Figures	5
General Information	6
Mission and Vision Statement	6
Company History	6
Our Services	6
Organizational Structure	10
Human Capacity and Capability	10
Equipment and Consumables	10
Materials/ Consumables	16
Methodology and Strategy	16
Safety and Safety Procedures	16
Change Management	20
Insurance	20
McGil Quality System and Clients	23
Employee Satisfaction	25
Organizational Focus	25
List of completed Projects	26
Contact	35
	2



**LIST OF PICTURES**

Picture View of Construction of Concrete Floor Supporting an Onsite Fabrication of Sound and Waterproof Portacabin for French School V/I	7
Picture View of Construction Stages of the Self-drained Portacabins	9
Picture View of Internal and External of the Portacabins	11
Picture View of MRS Building (Federal Neuropsychiatric Hospital ) Yaba	13
Picture View of Various Stages of Work for the Construction of the MRS Building	15
Picture View of an Offshore Re-roofing of ilado Diversity Center	17
Picture View of Various Stages of Works at Ilado Diversity Center	19
Picture View of the Heritage Bank Training School	21
Picture View of the Various Work Completion Stages for the Heritage Bank	24
Picture View of an Overhauling of a preivate Residential Building	27
Photographic Illustrations of some of our Completed Projects	31



Civil/Electrical/Mechanical

**LIST OF TABLES**

Table 1.0 McGil Senior/ Management Staff	14
Table 2.0 Some Projects Carried Out by McGil	28



Civil/Electrical/Mechanical

**LIST OF FIGURES**

Figure 1.0 McGil Organizational Structures	12
Figure 2.0 McGil Change Request Procedures	22



## GENERAL INFORMATION

### Mission and Vision Statement

“To redefine and set the standards in the provision of services to current and future customers, delivering same professionally in a timely and efficient manner.” – Mission statement

“To increase our customer satisfactions/retentions with quality services at reduced prices” – Vision Statement

- UBA Cooperatives
- United Bank for Africa Plc
- Addax Petroleum
- Total Upstream Company of Nigeria (TUCN)
- USAN Deepwater Development
- Chemical and Allied Products (CAP)
- Heritage Bank, and
- Individuals

### Company History

MycroCycle Global Industries Limited (McGil) is a limited liability company incorporated under the relevant laws in Nigeria. The company which was incorporated in the year 2006 in Nigeria has five arms and/or departments of which **McGil Constructions and Facility Management** is one .

From 2006 to date, the company has been able to establish herself as a major player in the midst of well-structured companies and organizations, there by providing services for multinational and international companies such as

- Total E&P Nigeria Limited
- Association Francaise De Nigeria
- US Embassy, Abuja
- French Embassy, Lagos

We work to establish strong bounds with our clients by identifying and providing our quality services

### Our Services

Although MycroCycle Global Industries Limited (McGil) was incorporated in September 2006, but the company has professionals with over twenty years experience in construction and project management. This gives the company an edge in any project embarked on.

At McGil, we believe in engineering and construction that are out of ordinary; something that is thoughtful, valuable, and enduring. We are involved in a wide variety of building construction types ranging from office building to residential and more. We are committed to bring value to our



Construction of a Concrete Floor to Support an onsite Fabrication of Sound and Waterproof Portacabins - Association Francaise de Nigeria (French School), V/I, Lagos



customers by providing innovative solutions that meet and exceed their wants. We view each relationship as partnership, whether a client, customer or our team members.

We provide services for every aspect of a constructional projects from initial design brief through construction to maintenance. Below are major services provided by McGil Construction and Facility Management.

- Construction of new building from scratch (civil works with electrical and mechanical inclusive): We have the capacity to residential building and offices of at most four floors.
- Renovation of existing and dilapidated buildings
  - From minor civil works to major
  - Total overhauling of electrical fitting – existing and new
  - Plumbing works
  - Finishing works (painting, tiling, POP, etc)
- External works such as
  - Interlocking stone/concreting
  - Drainages
  - External lighting
- Major electrical and mechanical works such as
  - Domestic and industrial electrical wiring/building services network
  - Construction of various network

piped services and system

- Fire security system such as fire
  - detector, fire extinguisher system, and hose reel
  - Air conditioning/ventilation system
- Road rehabilitation and construction
- Dredging and excavation of trenches
- Supplies and Equipment such as safety equipment/PPEs, construction (civil/electrical/mechanical/Plumbing and welding) materials and machines etc

We are experienced in every possible delivery method, regardless of contract type, McGil Constructions and Facility Management is a builder. We take responsibility for our roles; actively manage every component of the processes, and have in-house expertise in every aspect of our constructional works.

Further, we recognize the importance of HSE to both our clients, staff, and environment. So, safety and healthy constructional works are part of our culture. It helps to eliminate risk to you, and creates mutual benefit and cost saving





Civil/Electrical/Mechanical

Self-drained Sound and Waterproof Portacabins at Construction Stage – Internal construction with Electrical Works and External Steel Walls - French School, V/I, Lagos



environment.

reduced and competitive rates with best qualities at all times.

### Organisational Structure

Organisational structure for McGil Constructions and Facility Management is designed to allow flexibility in our operations towards quality and service excellence.

The company is a performance driven company and appraisal system is tied to same. Management of McGil understands each departmental goals, objectives, and mandates; and supports all units to achieve her goals. Figure 1.0 on page 12 shows our company's organisational structure for McGil Construction and Facility Management.

In pursuance of our excellence services, our company is registered with other Government's sector such as the Department of Petroleum Resources (DPR), NIPEX under both Major and Minor categories which are being renewed yearly., and DUNS as a sign of international recognitions.

### Equipment and Consumables

Our equipment ranges from minor working tools to major construction tools and machineries. These are purchased on every new projects to complement the existing ones in order to enhance our efficiency towards delivering quality products/services. These include amongst others; basic construction and safety tools, Jack hammers, vibrators, trucks, mixers, concrete cutters etc. These items are presently at our warehouse at Ojota.

### Human Capacity and Capability

McGil Construction and Facility Management is currently being managed by team of young and dynamic professionals as detailed below. Our team comprises of professionals to artisans who work on site.

Presently, we have nine senior and professional colleagues as detailed in table 1.0 on page 14 and sets of experienced artisans. Our staff are our assets ,and we do everything, through frequent trainings and exchange programmes, to increase them in skills and experiences.

Heavy equipment such as grader, pay loader, roller, and distributor are leased from one of the government approved heavy equipment leasing companies - **Buildwell Plants and Equipment industries Limited.**

We provide services to our clients at a very



Internal and External of the Completed Self-Drained Sound and Waterproof Portacabins -  
Association Francaise de Nigeria (French School), V/I, Lagos



Civil/Electrical/Mechanical

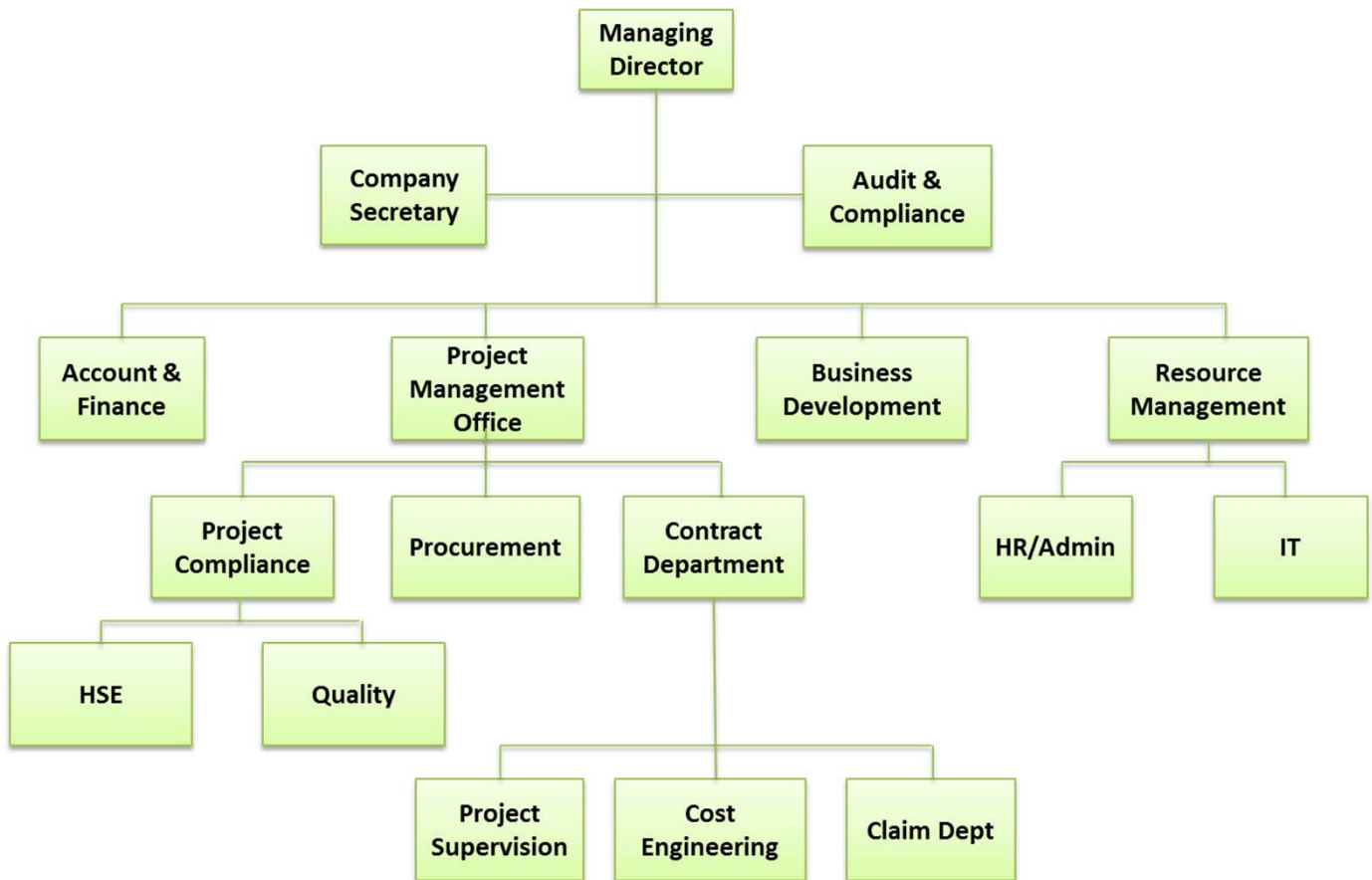
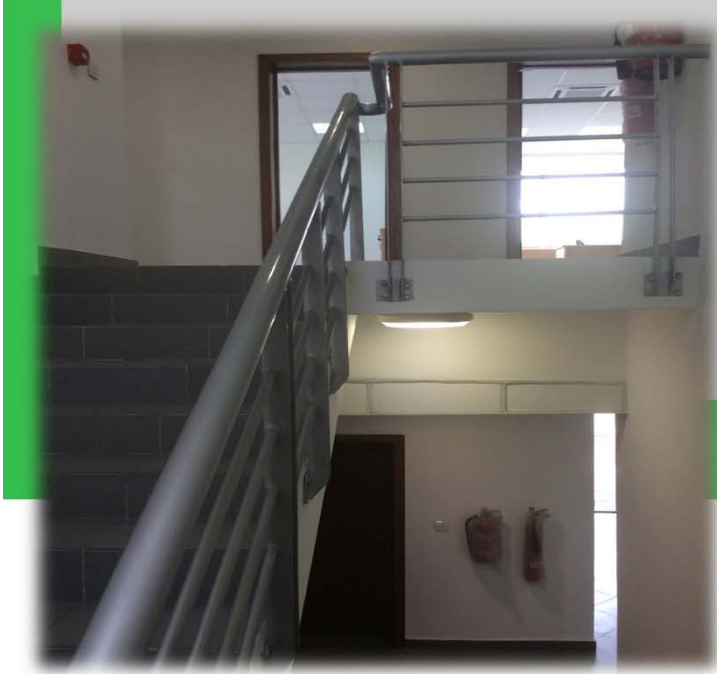


Figure 1.0 : McGill Organizational Structures



Completions of MRI Building Federal NeuroPsychiatric Hospital – Yaba Lagos : All Civil works were carried out by McGil



Civil/Electrical/Mechanical



Various Stages During the Completions of MRI Building Federal NeuroPsychiatric Hospital – Yaba Lagos



**Materials/Consumables:** We supply quality consumables to our client at a very competitive prices. Our consumables are usually purchase and/or obtained from genuine suppliers, and we give warranty on all our supplied items.

### Methodology and Strategy

Our general strategies in executing and completing any of our proposed projects follow the analysis stated below.

- Works are executed in line with agreed programme of works (POWs) approved by the client.



- All materials are approved by the client before usage on site
- Performance baselines are created for quality of works, and works quality check (control and assurance) are carried out during and after completion of works
- All stages/phases of works are approved by our clients before implementing the

subsequent phase

- HSE are implemented at all times on site

### Safety and Safety Procedures

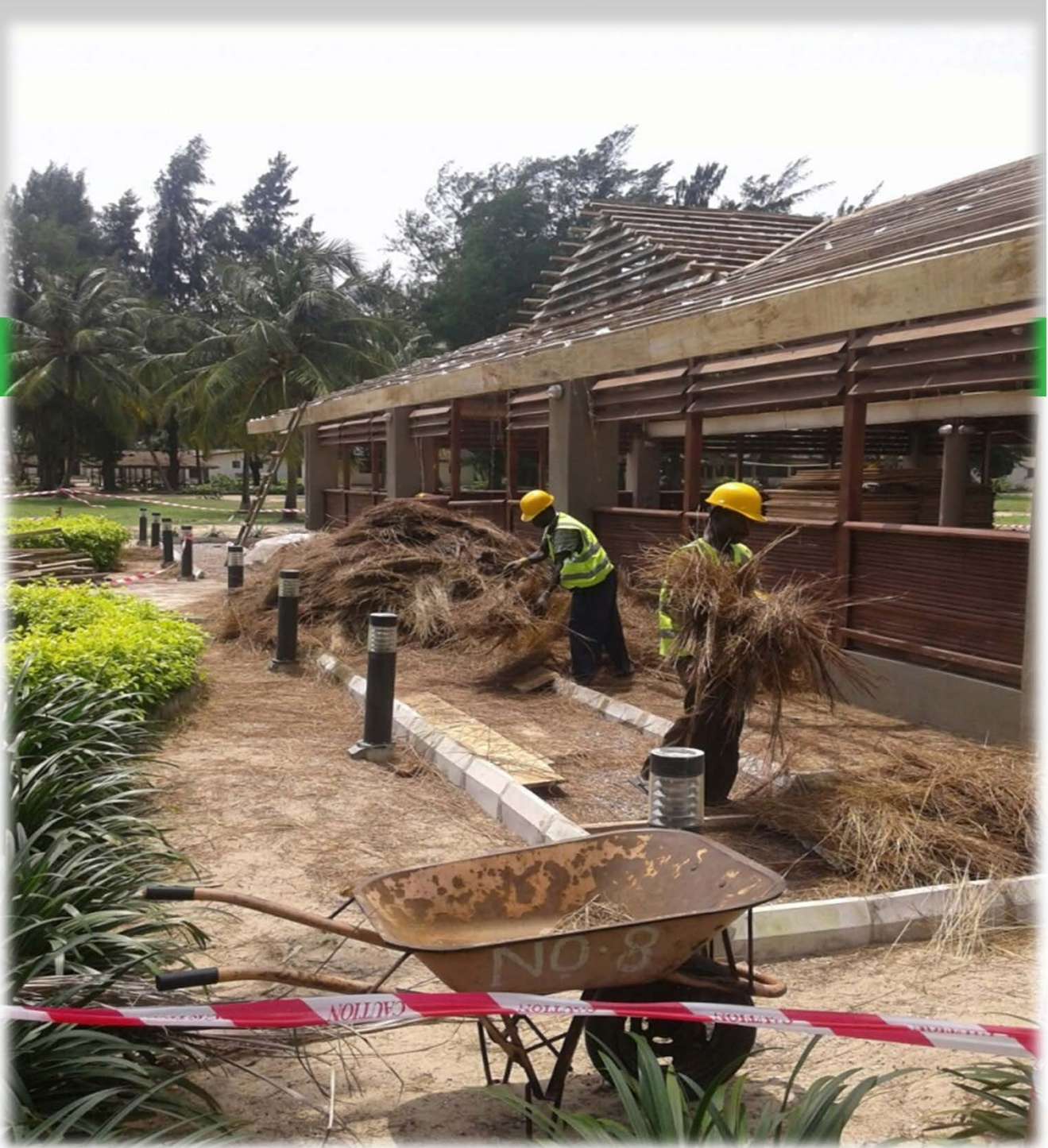
We are very conscious of health and safety of our workers, clients and individuals within the perimeter of jobsite. At McGil, we adhere to specifications given by Occupational Health and Safety Act and Regulations for Construction projects. We believe that HSE is a continuous responsibility of all - the constructor, employer and/or client, supervisors and workers.

**Our slogan is safety first and it begins with you!**

Apart from securing weekly client's work permit, and we strictly adhere to the signed Job Safety Analysis (JSA and/or JRA) with eyes on our in-house safety activities.

Before implementing any job activities, we always review the inherent hazards that might be involved in the cause of performing the activity. These risks are analyzed and mitigated using the necessary safety procedures.

We review the inherent risks in the materials, equipment, and skills that are



An Offshore Reroofing of Ilado Diversity Center for Total E&P





required in performing a job activity, and same are discussed with all workers assigned to the job.

In addition, all equipment are operated by experienced workers, and all necessary certification for heavy equipment and machines are also obtained prior to usage.



Furtherance to the above, we carry out the following before commencement and/ or during the implementation stage of our projects:

- Project manager select a site supervisor for the project
- A Joint Health and Safety Committee is selected for a project if the duration of the project is more than 3 months or the project has at least 20 workers. But if JHSC is not required, workers are allowed to select a Health and Safety Representative.
- Emergency procedures are developed , and employees and workers are trained on same
- The emergency procedures are pasted on site.
- We make telephone accessible on site in an event of an emergency
- If accident occurs on site, a report of the incident is made and sends to McGill management and client.
- McGill discourages the use of underage workers/minors.
- All works on site are provided with safety training before moving to site and during execution .e.g. fall protection system, Workplace Hazardous Material Information System (WHMIS).
- We ensure that qualified workers are selected to execute professional jobs.
- We develop fall rescue procedures and selected workers are trained on same
- We ensure workers use their safety equipment and tools at jobsite
- We inform workers on actual and potential dangers at all time, and protect them from risks.



Civil/Electrical/Mechanical



Various Stages of Completion Works for Ilado Diversity Center – Total E&P



- We listen to our workers and further encourage them to escalate safety issues
- We further give the workers right to refuse work if found to endanger their health and safety, and inform the project managers.
- Workers are warned not to engage in horse play on site
- New workers/hires are trained on safety before being posted to a site
- New hires must aware of health and safety procedures and precautions while on site.



- Site orientation must be carried out before the new workers are moved to site
- Safety engineer visit site at interval without any prior notice to ascertain safety compliance

### Change Management

Changes are always requested by clients. For any change request, will follow the procedures stated in our change management the flowchart illustrated below.

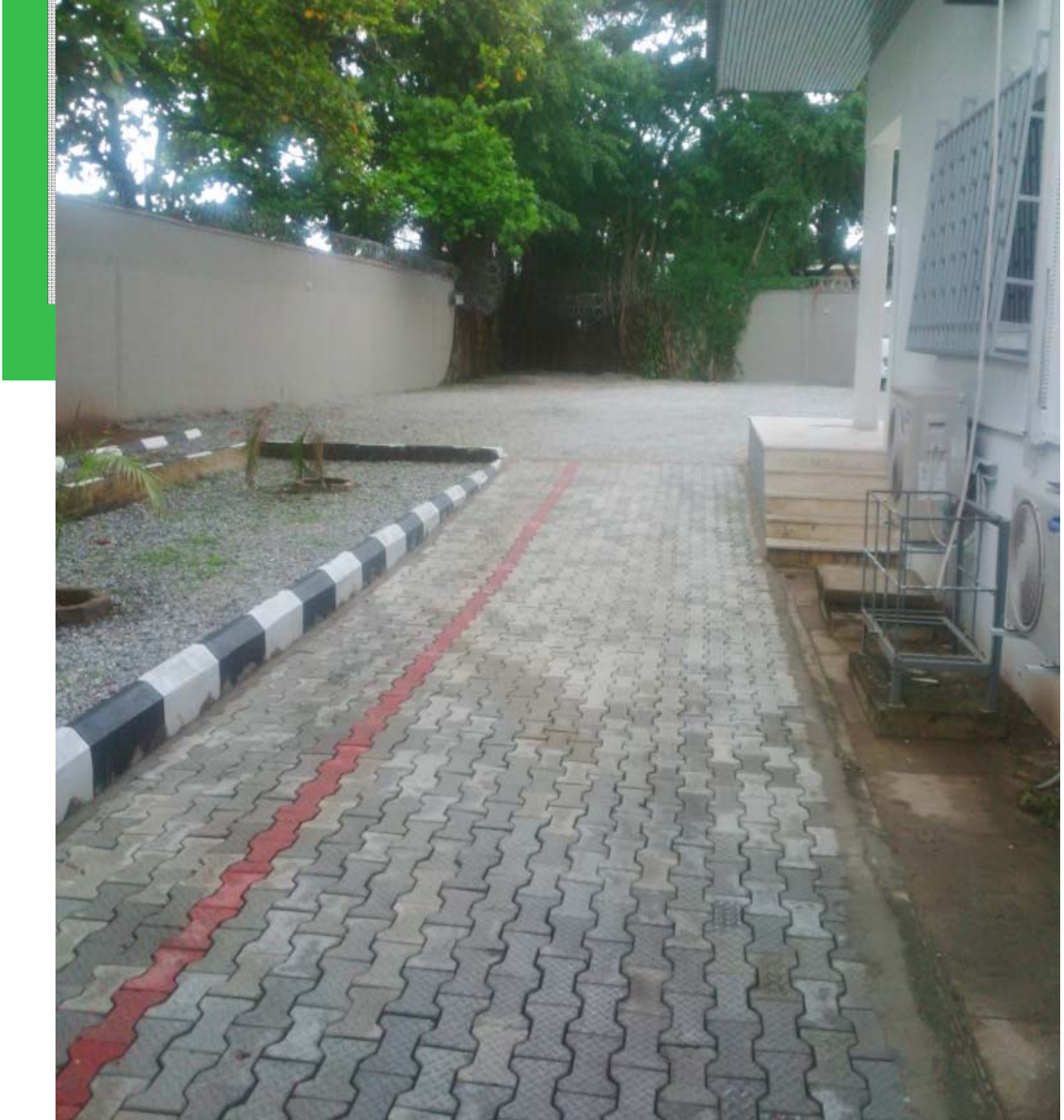
For any change request, necessary drawing(s) would be issued and signed off by client. With the receipt of the drawing(s), cost and schedule implications of the change would be advised for client's approval before implementation.

After the approval, the schedule's effect of the changes will be incorporated in the main programme of works (POW), and same would be advised to all stakeholders.

### Insurance

Accident in work places both onsite and offsite are responsibilities of each and everyone of our staff. We work together to prevent injury to any of the staff.

Nonwithstanding, our staff are covered with workmen compensation policy which is renewed yearly.



Civil/Electrical/Mechanical

Revamping of the Heritage Bank Training School – Ademola Adetokunbo VI Lagos



Civil/Electrical/Mechanical

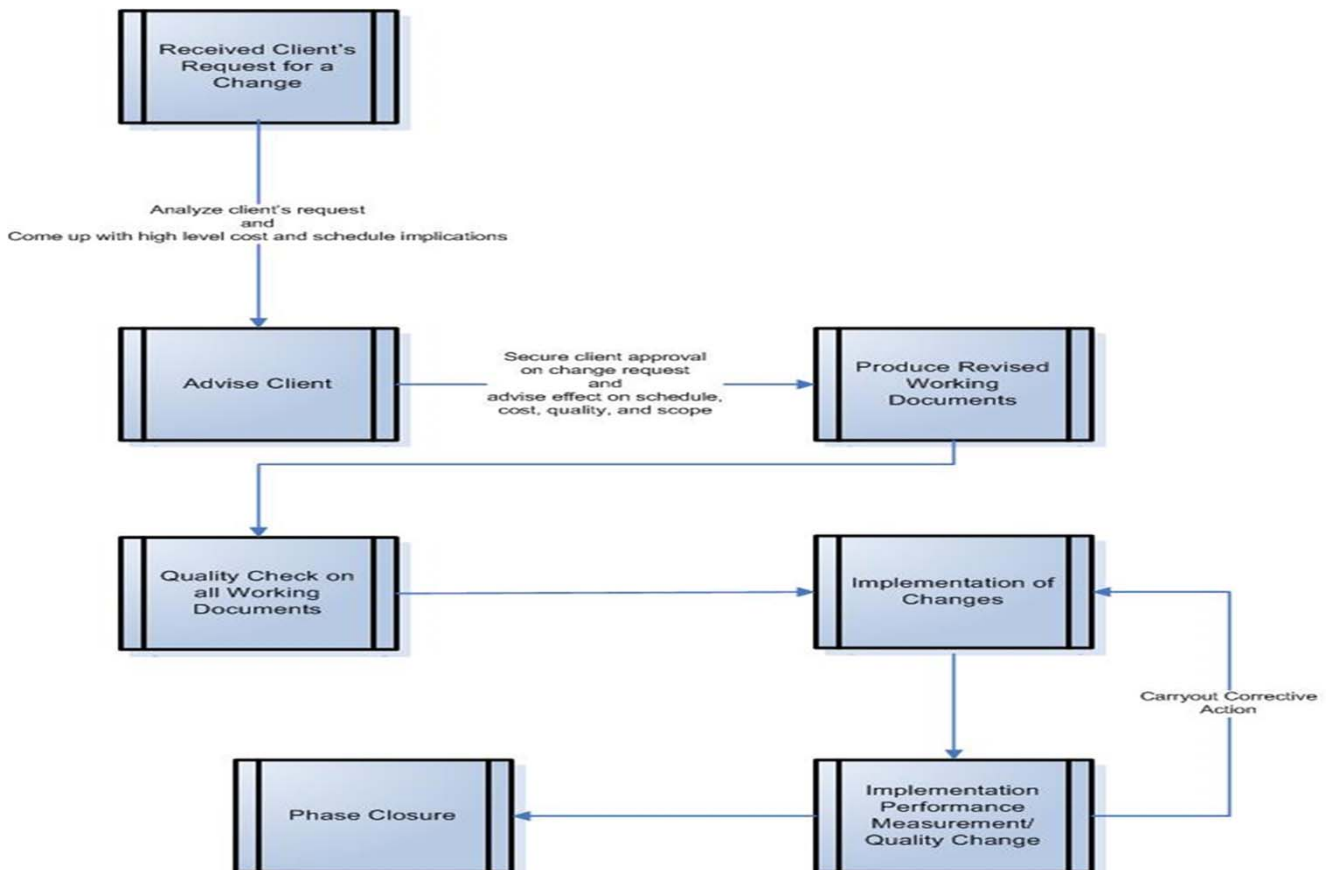


Figure 2.0 : McGil Change Request Procedures



### McGil Quality System and Clients

Quality has several definitions, but at MycroCycle Global we do everything possible to see that our customers or clients' expectations are surpassed thereby retaining them. Our quality system and policy is driven by four main factors as listed below:

- Customers and/or clients
- Products and /or services
- Employees Satisfactions, and
- Organisational focus

We use two main quality models (tools and metrics) for evaluating the effectiveness of our quality system and policy. They are:

- Balanced Scorecard, and
- Baldrige National Quality Program (BNQP)

At McGil, we examine our customers and/or clients and determine their requirements, expectations, preferences and market. We also build relationship with them, and determine the key factors that lead to their acquisitions, satisfactions, loyalties, and retentions which cascade into our business expansion and sustainability. For us to achieve the objectives, we do the following:

- Study the market to know our share gain

and losses

- Carry out survey, analyze the results, provide recommendations, and effect the recommendations. The survey is being carried out at intervals.
- Kept issue log and complaints received from customers towards our service excellence.

Further, we measure our customers' eccentricity using the following metrics:

- Market share gain and losses
- Retention of customers and/or clients
- Survey results in terms of customers' satisfactions
- Issues and complaints with resolutions and timelines
- Re-measure customers satisfactions on the resolutions adopted and timelines
- Field service performance
- Customers' abilities to certify our services, and
- Customers' recognitions



Civil/Electrical/Mechanical



Completion and Various Work Stages during Revamping of the Heritage Bank Training School – Ademolo Adetokunbo VI Lagos



- Employee development, and
- Employee knowledge management

### Organisational Focus

Organisational focus is very important due to its baseline effect on total organisational excellence. At McGill, we focus on total organisational quality which is achieved through the following:

- Leadership: our leaders develop and sustain a working environment in which employees become involved in helping organisational achieve its objectives.
- Strategic Planning: We carefully choose strategies that retain our customers and increase our bottom-line
- Client and market focus
- Measurement analysis and knowledge management: Survey and data gathering are taken very serious and lesson learnt database developed
- Human resource focus
- Process management, and

### Employee Satisfaction

Our internal ways and method of measuring our ability to meet customers' satisfactions through our people are measured with the indices stated below.

We take very good care of our employees' learning and motivations to enable them utilize their full potential in alignment with our goals and overall objectives and strategies.

We measure this through the followings:

- Employee retention
- Employee competency level





- Business results: Emphasize is laid upon service outcomes, customer satisfaction, financial and marketplace performance, human resource results, operational performance, and leadership and social responsibility. These results are examined and compare to that of competitors.

### List of Completed Projects

McGil Constructions and Facility Management has carried out and completed many projects for her clients. These projects were handed over to the clients without cost overrun and on schedule.



Total Overhauling of a Client's Residential Apartment in Mainland Lagos State – Before and After Pictures



Civil/Electrical/Mechanical

Some Projects Carried Out by McGil

S/ N	Project	Client	Value	Completion
1	Revamping of French School Apartment at Akin Ogunlewe	Association de Francaise Nigeria	N8,500,000.00	August 2009
2	Revamping of Paradise Building at Walter Carrington Crescent VI Lagos	USAN/Total E&P Nig Ltd	\$150,000.00 USD	October 2010
3	Revamping of knoor House BQ	CSP – Total E&P Nig Ltc	\$23,300.00 USD	September 2010
4	Revamping of Egina Archive	Egina/CSP – Total E&P Nig Ltd	\$33,350.00 USD	November 2010
5	Pension Fund Car Park	Total E&P Nig Ltd	N71,000,000.00	September 2011



Civil/Electrical/Mechanical

Some Projects Carried Out by McGil

S/ N	Project	Client	Value	Completion
6	Illu Drive Residential Apartment	Total E&P Nig Ltd	N21,000,000.00	April 2012
7	Fabrication and Installation of Escape/ Emergency Staircase (Steel Structure) at Walter Carrington Lagos	Total E&P Nig Ltd	\$23,330.00 USD	October 2010
8	Revamping of Roof and Premises at Ilado Close Ikoyi Lagos	French Embassy	N9,200,000.00	August 2012
9	Heritage Bank Training Center	Heritage Bank	N23,080,032.51	September 2013
10	Residential Revamping for a Client at Romay Garden Lekki	Individual	N4,769,748.00	January 2014



Civil/Electrical/Mechanical

Some Projects Carried Out by McGil

S/N	Project	Client	Value	Completion
11	Production As- Built Drawings for the Production Floor	CAP (Dulux)	N5,000,000.00	September 2014
12	Reroofing of Diversity Center (Offshore)	Total E&P Nig Ltd	N7,845,911.88	August 2014
13	Completion of Yaba Fedreral NeuroPsychiatric Hospital Building	Total E&P Nig Ltd	N22,143,387.92	August 2014
14	Design, Fabrication, and Construction of Self-drained, Sound and Waterproof Portacabins	French School	N20,172,527.63	November 2014



**Photographic Illustrations of Some of Our Completed Projects**



External view of the revamped Paradise Building at Walter Carrington Crescent in Victoria Island Lagos. The contract was awarded by Total E&P Nig Limited to McGill Construction and Facility Management at a total cost of \$150,000.00 USD and was completed within six months.



Another view of the external of the Paradise Building at Walter Carrington Crescent in Victoria Island Lagos. The staircase shown in the picture was designed, fabricated, and installed by McGill Constructions and Facility Management. The award of the staircase was totally different from the revamping of the main building. It was awarded to McGill at a total cost of \$23,330.00 USD, and was completed within three months.



A picture showing the external of the Knorr House Boys' Quarter. The project was also awarded to McGill Construction and Facility Management by Total E&P Nig Limited at a total cost of \$23,350.00 USD for a period of a month.



External works carried out at Eletu Ogabi in

Victoria Island Lagos. The project was carried for Egina Field at a cost of \$33,500.00 USD for a period of a month. The facility serves as library for the company. Egina Field is an Oli and Gas Exploration company.



The above picture shows felting materials used during a roof repair at a project for a client. Total revamping of the roof was carried to prevent leakages of the existing roof. The pipes were also used for the replacement of old rainwater pipes .



Another view of a BQ whose total revamping of the roof was carried out. This picture shows the facility mentioned in picture five above.

The above view show a duplex of seven bedroom apartment for a client at Lekki Phase 1. The design, supervision, and construction of the building were carried out by McGill Constructions and Facility Management. The facility is completed and now in use.



The above picture shows eight units of bedroom apartment flat at Oniru in Victoria Island Lagos. The building has been completed, and were designed and supervised by McGill Construction and Facility Management.



McGil Constructions and Facility Management is a one shop in construction.





The apartment picture shows the changeover switch and electrical panel for one of the apartment that was revamped for a client. Total revamping which include electrical and mechanical were carried out.



The above picture shows one of the UBA Branches developed for the Bank. The business office is operational, and was completed within a completion period of six months



The above two pictures shows a manual demolition and carting away of rubbles at the demolished site in lieu for Pension Fund Carpark for Total E&P Nigeria Limited. The site preparation was carried out by McGil Construction and Facility Management, and the above workers were staff of the company.





View showing part of the repaired roof carried out in one of our site in Ikoyi. The felting of the entire roof slab was carried out coupled with flashing of the parapet. The entire project was completed within 27 days and on both cost and time schedules.

### Contact

**MycroCycle Global Industries Limited  
(McGil)**

339 Borno Way, Alagomeji, Yaba, Lagos  
Tel: 01-8429649  
Mobile: 08023444484; 07034626743;  
08033957026  
Email: [careline@mycrocycleglobal.com](mailto:careline@mycrocycleglobal.com)  
Website: [www.mycrocycleglobal.com](http://www.mycrocycleglobal.com)

**McGil...towards professional  
qualities at all times**